

1st you have
a Dream...

From



Gravel Pit

To



Paradise

Before Harris Pond
was Harris Pond.....



Because there was a gravel pit here before, there was always water here. It just wasn't shaped and developed, but family members still took opportunity to have some play-time



Early on we divided the gravel pit into a water area and land area. Then we brought in tons of top soil to fill in the area that we didn't want water in. The fields were mostly alfalfa before the grass was planted.



One challenge, before the grass, was all the weeds. We decided that we would rather take care of grass than weeds!



In 1999 Jeff finished shaping the pond and island area



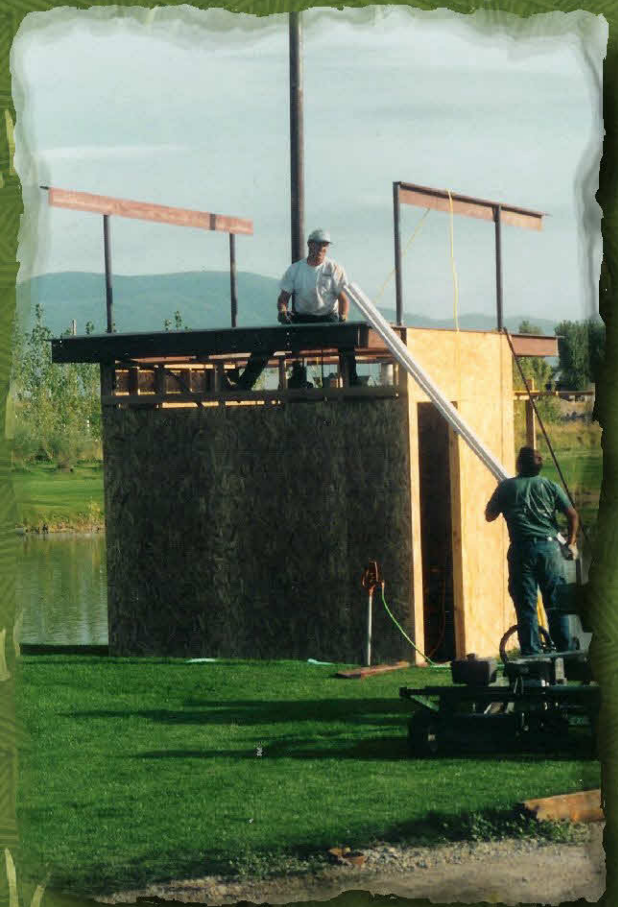
In 2000 all the spaping was complete. The bridge was built, sprinklers were laid and grass was planted

2001



Originally, the zip line was planned to end on the island. That is why there is a pole there. However it was decided that in order to be safe it needed a longer run and was moved to the south-east corner.





Now that the grass is up, it was important to build a structure to protect the pump from the weather. We chose to build a storage building with a tower on top for the zip line to accomplish this task.

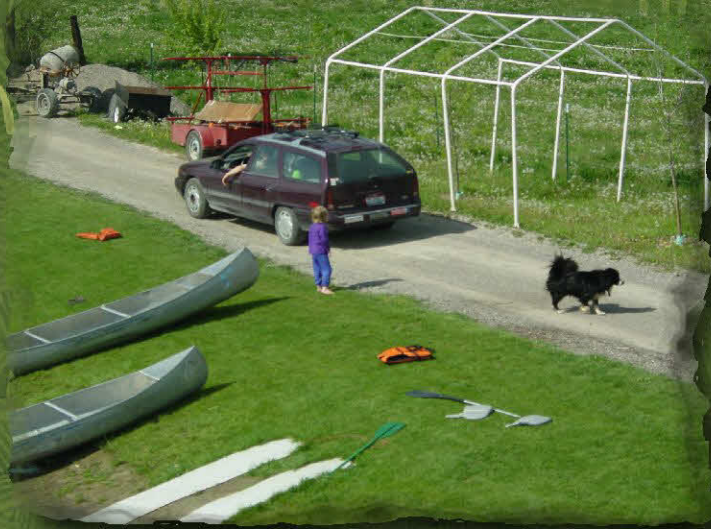


One of the biggest challenges in building the tower was the circular staircase. Jeff's brother, Thom, helped design it, but Jeff made it happen. The first finished tower was pretty rough. We simply painted the plywood and put up a piece of carpet for a door.



Our first mower's were small garden tractors. We added a pull behind mower that was offset and a grass catcher behind that. It worked pretty well at the time

2002



In 2002, we seriously started the waterfall, and added a dock. Most gatherings took place on the large grassy area by the tower.

Building the Waterfall



The Waterfall was started in 2001 but was not completed until 2003.

2003



In 2003 we added the water slide and the pole swing.



Late in July of 2003, with the help of brother, Randy, and lots of cousins, the waterfall was finally complete



This is an arial
view of the
property taken
from Alan
Anderson's
plane in 2003

